

GALVESTON EDUCATION TRANSFORMATION PLAN



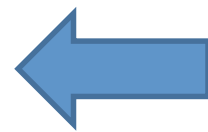
Galveston Sustainable
Communities Alliance
Creating Opportunities. Transforming Lives.™

***Career and
postsecondary
readiness for all
Galveston
students***



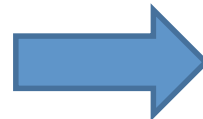
The Vision

A city-wide, Pre-Kindergarten to 16 initiative to ensure career and postsecondary readiness and opportunities for *every* student, transforming Galveston into an education leader in Texas and the nation.



*Implementing
this*

*To produce
this*

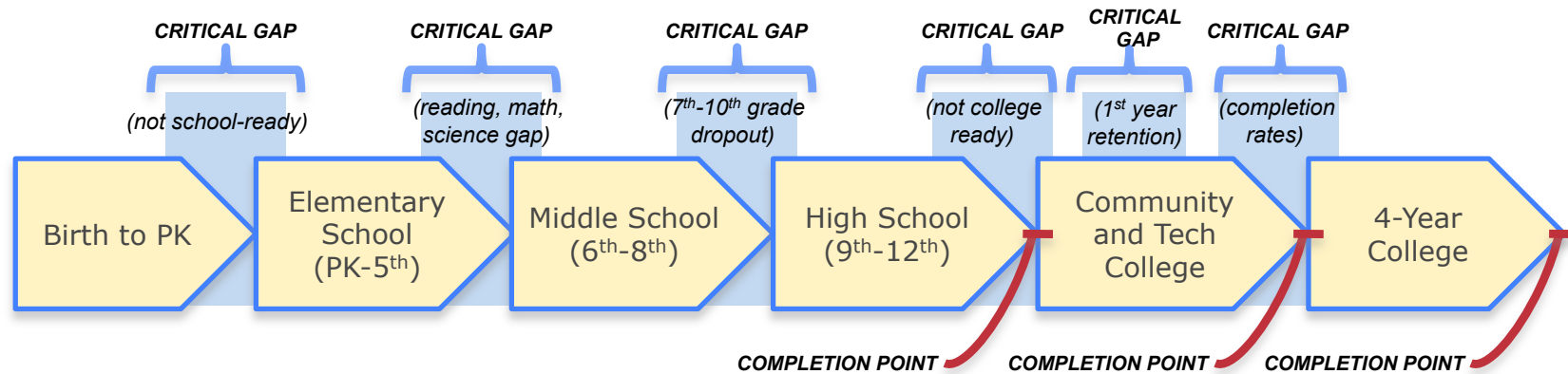


Why is this important?

High quality, accessible education—from early childhood development to college and beyond—has profound, documented effects on residents by increasing earning potential and employment, improving lifelong health, reducing dependence on social welfare, reducing involvement in the criminal justice system, and supporting general success and quality of life.

The General Challenge

LEAKS in the Postsecondary/Career Readiness and Success Pipeline In Galveston



We must close these gaps in students' college and career readiness, particularly for low income students.

Galveston Gaps: Early Childhood

UNEVEN QUALITY AMONG GALVESTON CENTERS

- ❑ Only 26% (5 out of 19) early childhood centers **servicing infants and toddlers** rated as higher quality*
- ❑ Only 50% (14 out of 28) early childhood centers **servicing 3 and 4 year olds** rated higher quality

INSUFFICIENT HIGHER QUALITY SUPPLY TO MEET DEMAND FOR LOW INCOME FAMILIES

- ❑ 829 additional spaces needed for **infants and toddlers** for low income families
- ❑ 292 additional spaces needed for children **ages 3-4** from low income families

* Early childhood assessment led by Dr. Cindy Roberts Gray, Third Coast R & D; used six guiding principles of high quality early child care from the Business Roundtable

Galveston Gaps: Early Childhood

INEQUITABLE DISTRIBUTION OF QUALITY

- ❑ Only 12% of low income children are enrolled in higher quality **infant/toddler** centers
- ❑ 69% of low income children are enrolled in higher quality ECE for children **ages 3-4**

INADEQUATE STAFF TRAINING, PARENT EDUCATION, MATERIALS, FULL-DAY PK FUNDING

Galveston Gaps: K-12

HIGH SCHOOL DROP OUT RATES DOUBLE THE STATE AVERAGE OF HIGH SCHOOL

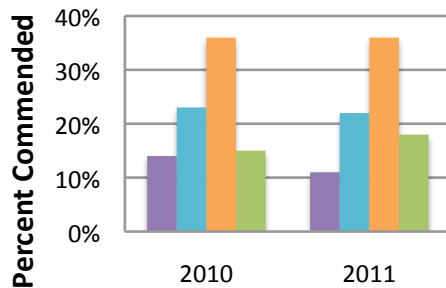
- ❑ About 15% of Galveston ISD students are dropouts; for Texas City ISD, 5.7%. This is down from about 22% in 2008 and graduation rates are up by 10% since 2010.

STUDENTS NOT PREPARED FOR POSTSECONDARY:

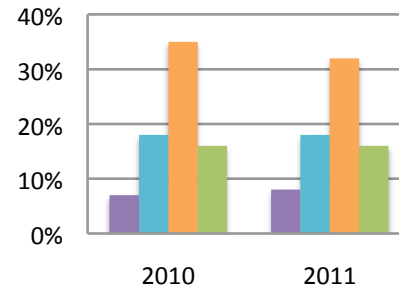
- ❑ College readiness indicators are on average low for Ball High School: SAT average 932 v.s. state average of 962; only 15% of students score at commended level in English Language Arts and math (note: 35% is considered a strong performance).
- ❑ About 50% of students graduating from Ball high school require one or more remedial education courses in a community college

Galveston Gaps: Achievement Gaps on TAKS Commended Rates

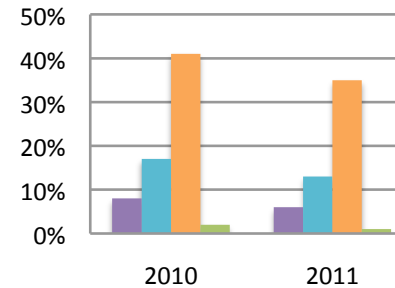
Reading/ELA



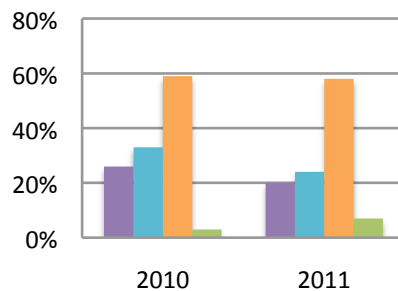
Mathematics



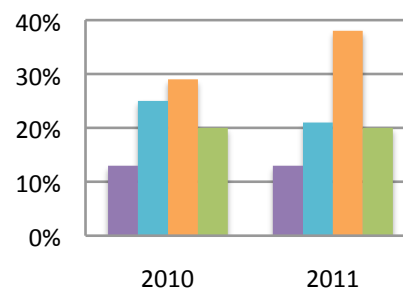
Science



Social Studies



Writing



■ African American

■ Hispanic

■ White

■ LEP

Hispanic and African American students' scores are about 45% to 75% lower than White students' scores.

Galveston Assets: PK-12

LEADERSHIP

- ❑ Strong GISD superintendent with vision who works well with his board and is willing to make tough decisions
- ❑ Capable leaders in charter and several private schools

TEACHERS

- ❑ Many dedicated, capable teachers PK-12
- ❑ \$8.6 million Teacher Incentive Fund grant to revamp the GISD teacher evaluation system, provide incentive funding, and pay for value-added data system

Galveston Assets: PK-12

CHOICE

- ❑ **GISD is an open choice system, one of the few in the state** with high performing options PK-12 in Oppe, Parker, Austin, Scott, Ball Prep, nationally recognized Ball HS AP program, and a promising KIPP Coastal Village
- ❑ **Many high quality early learning centers**, including GISD's full-day 3- and 4-year old programs and several charter, nonprofit and church PK centers that are among the 14 centers rated as higher quality
- ❑ **Promising charter options:** Ambassadors Prep, Odyssey
- ❑ **Private school options:** Satori, Trinity Episcopal, O'Connell High School and Holy Catholic Family

Galveston Assets:PK-12

SUPPORT FOR SCHOOLS AND STUDENTS

- Several strong support organizations for education such as Smart Family Literacy, Early Learning Collaborative, Communities in Schools, Boys and Girls Club, YMCA, Family Service Center, and St. Vincent's House

FUNDING FOR EDUCATION

- GISD discretionary grants, GISD Education Foundation grants, philanthropic grants, and support from UTMB and TAMUG have added close to \$35 million to the schools and school support organizations the past 2 years.

Prototypes Demonstrate Success

- ❑ **Indianapolis, IN: Mind Trust**, a nonprofit developed a comprehensive education transformation plan and raised \$30 million for the plan in six years.
- ❑ **Los Angeles, CA: The Los Angeles Education Partnership** developed an education plan, raised over \$25 million, and created 9 high performing schools.
- ❑ **New Orleans, LA: New Schools for New Orleans** created a comprehensive plan and started 10 new charter schools; student achievement score gains in those schools were triple those of the state. They have raised over \$40 million.

A GREAT PLAN FOR A CITY MAKES A DIFFERENCE

Transformation Goals: Galveston 2020

By 2020, Galveston will have achieved the following goals*:

STUDENTS READY FOR KINDERGARTEN

- ❑ 80% percent of children will meet kindergarten readiness indicators

STUDENTS STAY IN SCHOOL AND PREPARED FOR COLLEGE:

- ❑ 92% of student will graduate from high school; 80% of students graduating from high school will be ready for postsecondary or already have a tech certificate; only 25% will require remedial education.

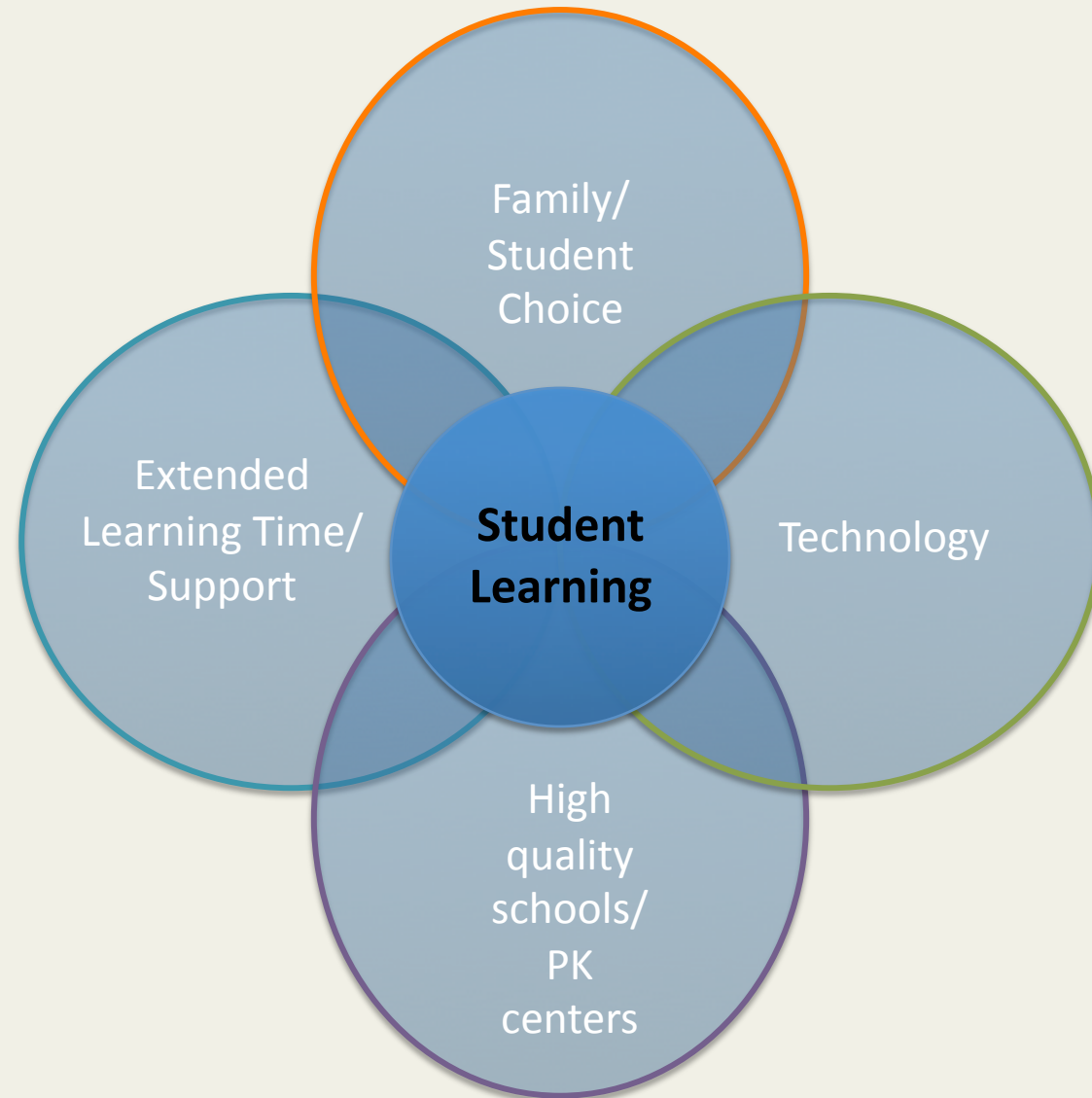
STRONG COMPLETION RATES:

- ❑ 40% of students tracked in the current 8th grade cohort will receive a postsecondary credential; 30% of Hispanic and African American students will receive credential

These rates are approximately double current rates.

**Note – these goals, although based on early evidence, will need to be adjusted based upon further review of current data and additional evidence in other cities.*

Key Premises of the Plan



Ten Point Transformation Plan

1. Begin early with a strong foundation in prenatal care, parent training, and high quality early childhood learning options for all families.
2. Enhance quality K-12 school choice options for Galveston families – magnet schools within GISD such as Science, Technology, Engineering and Math (STEM) options including Medical; charter schools; and scholarships to private schools.
3. Expand the technology infrastructure so that digital learning can scale rapidly in Galveston.
4. Extend learning by enabling schools and students to choose part-time online learning, have flexible and or extended hours, and align digital content in after school and summer programs with district standards and curricula.
5. Create emerging leader and master teacher pipelines, with incentives to attract outstanding teachers and leaders -- early childhood and K-12 -- and provide them with state-of-the-art training, much of it provided digitally.

Ten Point Transformation Plan

6. Assist all English Language Learners to transition from their native languages to English within two years of arrival, using digital content to enhance ELL instruction.
7. Strengthen career and technical education and postsecondary readiness through partnerships between GISD, Galveston College, College of Mainland, TAMUG, UTMB, AVID, and funding for *all* high school students to earn dual credit and take college entrance tests.
8. Use a collective impact approach that brings together nonprofits and school leaders to leverage nonprofit services to improve student achievement.
9. Develop a system that provides high quality, user-friendly information about education options PK through postsecondary so that families are fully informed.
10. Implement social and emotional learning standards and programs in GISD to improve student behavior and attendance.

The Transformation Plan

The full transformation plan (see www.galvestonsca.org) addresses the following areas for each of the 10 points of the plan:

- ❑ **Key partnerships**
- ❑ **Funding required**
- ❑ **Capacity building**
- ❑ **Performance management/accountability**

The next three slides provide suggested high priority areas.

Begin Early - - Zero to 4

Key Partnerships

- State and national organizations
- Early Childhood Centers including GISD, nonprofits, Head Start, EC Collaborative
- UTMB; UT Health Science Houston
- SMART Family Literacy; Family Service Center; Families, Children and Youth Board
- Neighborhood Centers; United Way
Rosenberg Library

Capacity Building

- Expand quality prenatal care to low income families
- Create a progressive ramp for early childhood educators, beginning with high quality introductory training and certificates at 6-months, and 1- and 2-years; provide technical assistance to centers
- Scale up Reach Out and Read, parent training programs, and Smart Family Literacy
- Create model program to get technology apps (Dream box, etc.) into at risk homes
- Develop model early childhood center

Funding

- Secure state funding for prenatal care
- Grant funding to create digital early educator training program
- Grant funding for expansion of ROR, parent training, Smart Family Literacy and model PK program
- Work with tech providers to get free apps into low income homes
- Funders and business may establish a funding collaborative for early childhood

Performance Management

- Encourage all Galveston PK Centers to participate in the state Kindergarten Readiness System as a foundation to an expanded system in Galveston, to track and report progress toward the goal of all children entering school ready to succeed
- Create an integrated data system updated annually with information about Galveston early childhood programs
- Provide user friendly data to parents about early learning options so they can make informed choices

Expand Postsecondary and Career Readiness Initiatives

Key Partnerships

- GISD
- Galveston College, College of the Mainland
- UTMB
- TAMUG
- Educate Texas
- AVID (college prep training)
- Strive for College or TX College Advising

Capacity Building

- Enhance quality CTE offerings at GC and GISD
- Develop career pathway programs for all middle school students, similar to Pharr San Juan Alamo ISD
- Develop high school pathways for medical, arts and media, and STEM.
- Enhance credit recovery programs through online
- Enable all GISD students to take dual credit courses leading to college credit and/or tech certificates; enable all students to take SAT, ACT, and AP if in AP course
- Add career and/or college advisors: expand AVID

State and Federal Funding

- Secure any state and federal funds to expand CTE offerings at Galveston College and GISD
- Grant funds to implement career pathway programs
- Allocate TEA funding for credit recovery
- Grant funds to expand dual credit to all students; get local colleges to reduce tuition costs and fees
- Grant funds needed for college/career advisors
- Grant funds may be needed to pay for college readiness tests for low income students

Performance Management

- Implement software system to track individual student career and college plans
- Enhance GISD data system to track dual credit, AP, and other college readiness indicators and produce annual reports for community

Expand Technology Infrastructure and Digital Learning

Key Partnerships

- Verizon
- AT & T
- Comcast
- Apple
- Dell
- Local corporations and businesses
- Digital Content Vendors

Capacity Building

- Work with local companies to provide high speed internet into low income family homes
- Make sure all schools in Galveston area have good broadband access and necessary technology
- Work with local companies to provide low cost smart phones and apps to low income families
- Expand computers and learning software available for students, such as Agile Mind (used in Central)
- Implement blended-learning pilot for blended learning such as a Flipped Classroom model

Funding

- Access any state and federal funds available for technology (GISD has submitted Race to the Top-District grant application)
- Funders may consider developing a technology funding partnership to enhance digital learning, including a pilot project for a blended learning pilot such as a Flipped Classroom

Performance Management

- Develop or secure from provider a check list to determine technology readiness of schools to expand to more digital learning and track progress toward becoming 21st C tech savvy schools

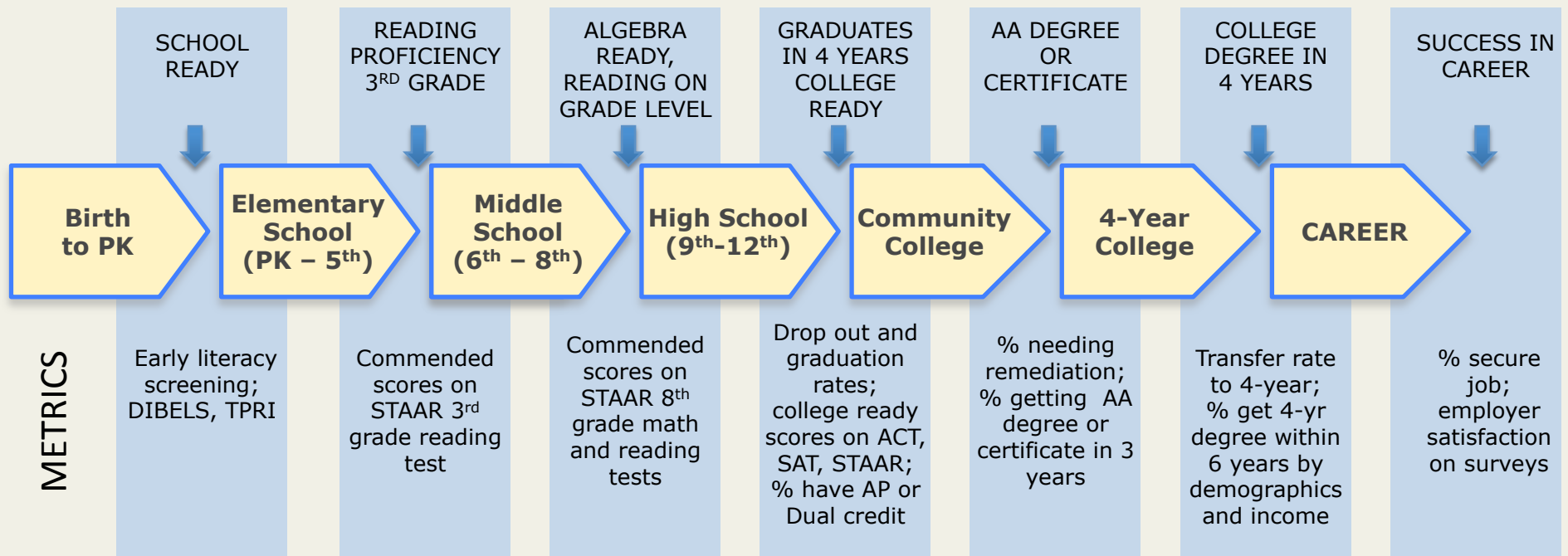
Identifying Priority Projects

AREA	EVIDENCE OF IMPACT ON STUDENT ACHIEVEMENT	POTENTIAL FUNDING AVAILABLE	COMMUNITY LEADER INTEREST
Early Childhood Leading to K-Readiness	H	H	H
Career Pathways Leading to Career and Postsecondary Readiness	H	H	H
Educational Technology	H	H	M

H = High

M = Medium

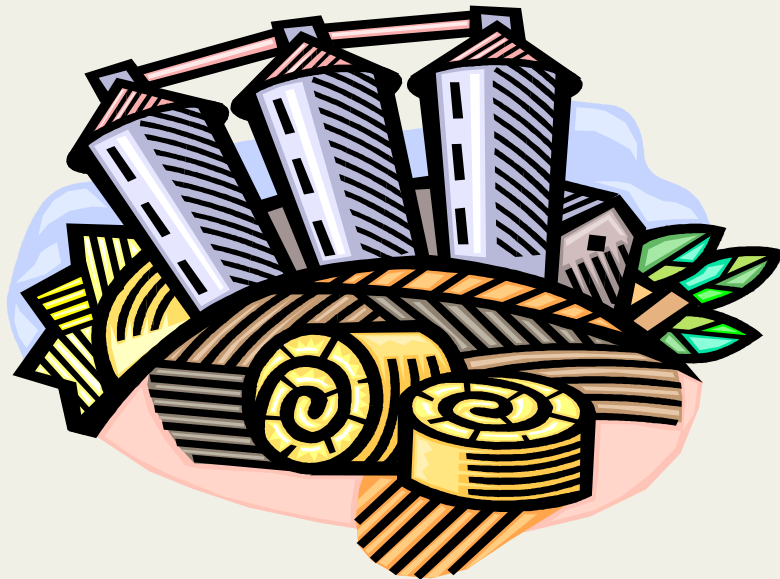
METRICS TO MEASURE SUCCESS



*Note: **Strive** in Cincinnati maintains city-wide metrics for the community; **All Kids Alliance**, a new nonprofit in Houston, is providing this for the Houston area.*

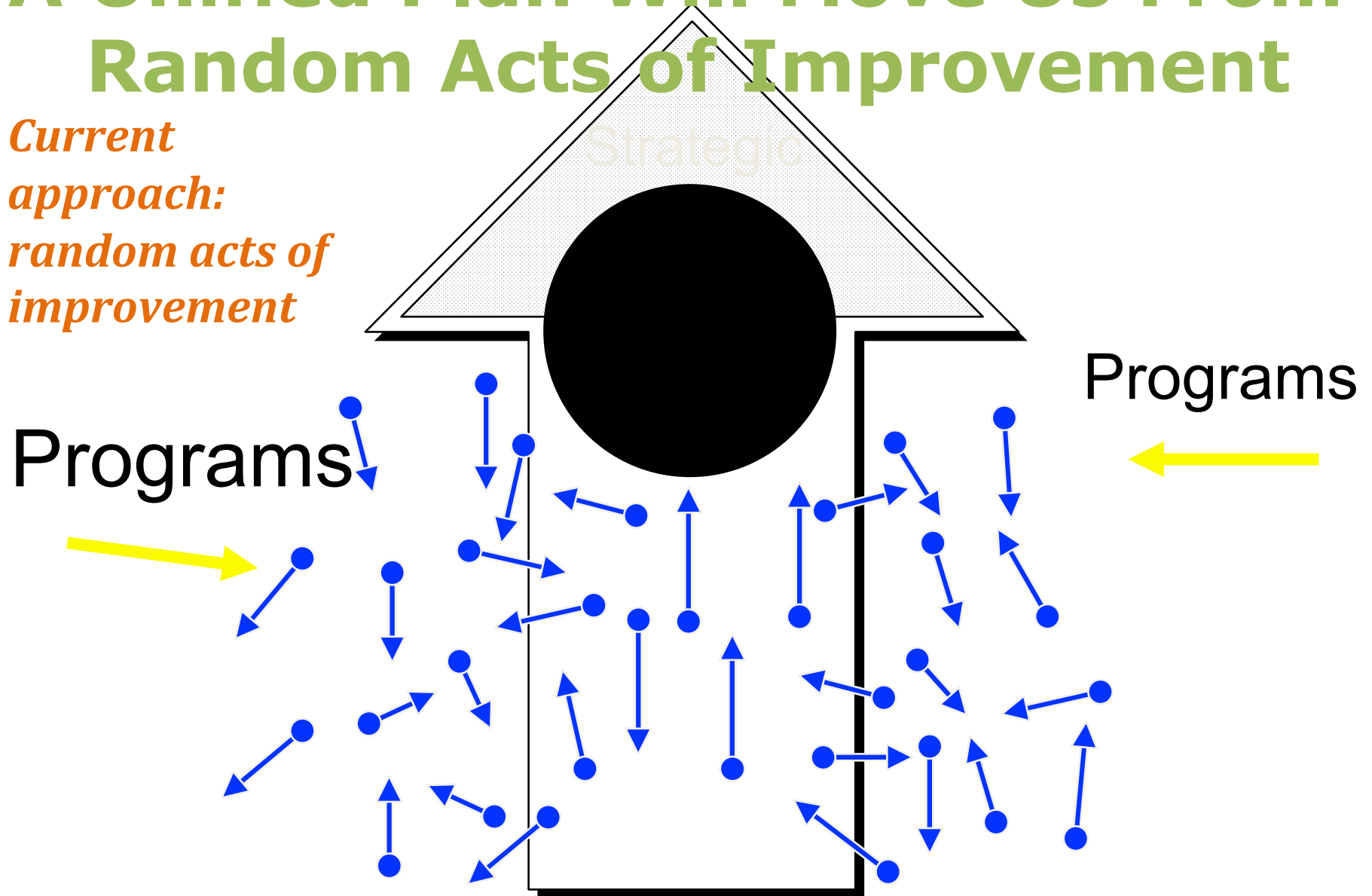
Making the Vision a Reality

*Imagine all of the Galveston Foundations (and several Houston foundations interested in Galveston), businesses, individuals, nonprofits, schools, churches, and government agencies getting out of their silos and **working together** to implement a strategic education transformation plan.*



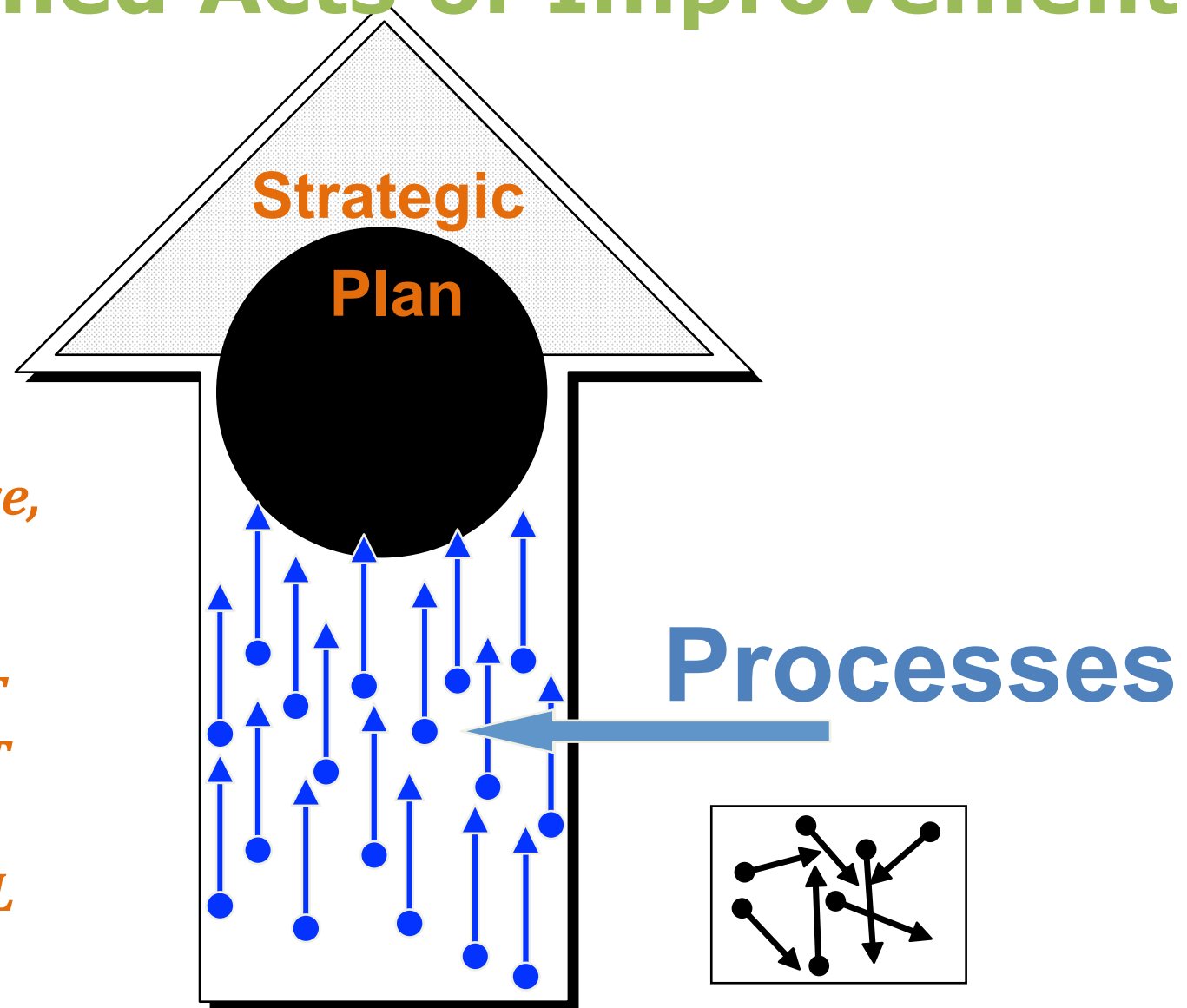
A Unified Plan Will Move Us From Random Acts of Improvement

*Current
approach:
random acts of
improvement*

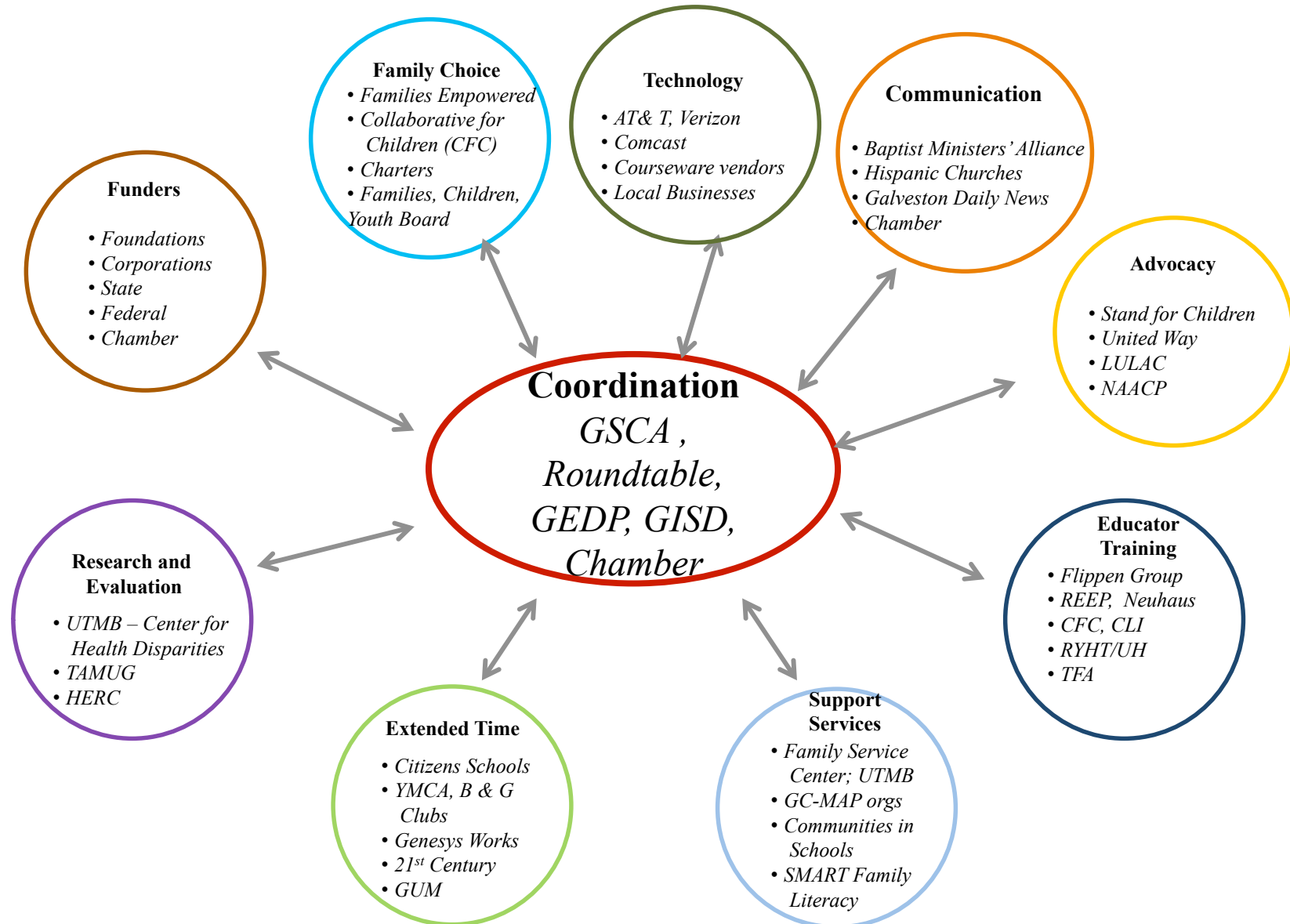


To Aligned Acts of Improvement

*Need to align acts of improvement around a comprehensive, plan that **TRANSFORMS THE CURRENT SYSTEM – NOT JUST INCREMENTAL CHANGE***



POTENTIAL IMPLEMENTATION PARTNERS



Next Steps

- ❑ Refine draft plan based on feedback from Galveston Foundations Roundtable, GISD, charter and private schools, UTMB, TAMUG, Chamber, church leaders, nonprofit leaders, teachers, and other potential partners
- ❑ **Finalize the plan by June 30, 2013**
- ❑ Determine costs of various components and potential funding
- ❑ Prepare seven-year implementation plan with specific action steps and timetables for each of the ten points
- ❑ Confirm priority projects and begin aligning funds around those projects

Together we can achieve this bold vision of career and postsecondary readiness for all Galveston students.

